

# Active Administrator® for Active Directory Health

Real-time AD health and performance diagnostics tool

Active Directory (AD) issues can have wide-reaching effects, including system downtime, directory unavailability and end-user disruption. Yet, administrators have no easy way to identify resource bottlenecks, causing them to spend too much time troubleshooting and resolving problems in AD. And the addition of Azure AD to environments only intensifies these issues.

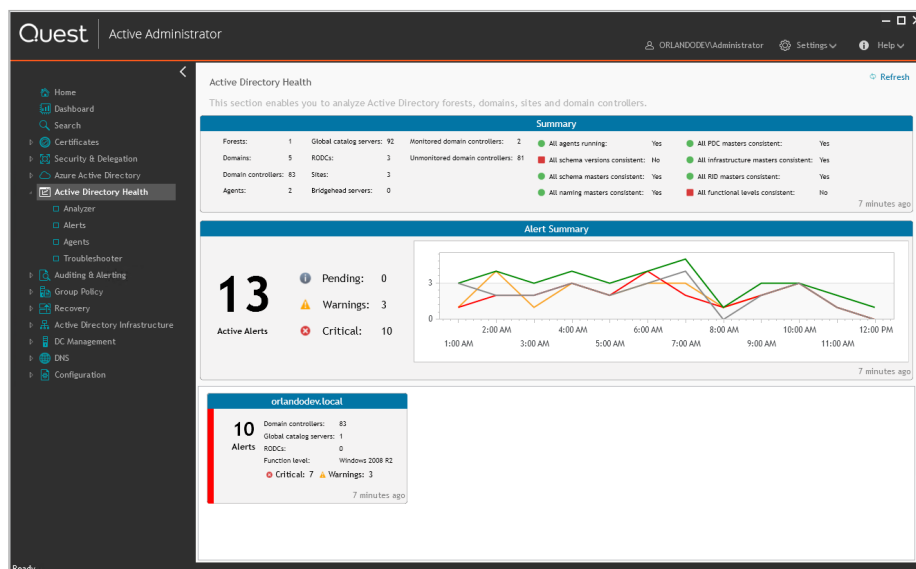
Quest® Active Administrator® for Active Directory Health ensures the health and availability of AD with troubleshooting and diagnostics tools that monitor performance to maintain user productivity. With Active Administrator for AD Health, you get real-time diagnostic data from a centralized dashboard, eliminating the learning curve so you can identify the root cause of AD problems before they impact users.

## FEATURES

- Centralized network operations view** — Get a centralized location where you can monitor your forests, domains, sites and domain controllers in the new Network Operations Center (NOC) view. Get a summary of data points, active alerts and detailed information on each domain, and set up unique profiles to view only the specific data you need. Active Administrator for AD Health also enables you to create topology diagrams for a visual representation of your network.
- Azure AD Connect sync monitoring** — View the status of the syncs between AD to Azure AD Connect so you can stay on top of syncs without compromising productivity. Active Administrator for AD Health lets you view a list of the installed connectors, properties and partitions, and gives you the ability to run profiles of selected connectors.

## BENEFITS:

- Speeds AD problem resolution with immediate visual feedback on the status of individual domain controllers
- Easily identifies resource bottlenecks in real time
- Analyzes performance over time to detect performance trends before they impact users
- Provides health and performance alerts and related diagnostic data in a single console to proactively resolve AD problems
- Ensures changes sync accurately and efficiently to Azure AD



Quickly view the AD health, identify resource bottlenecks and drill down for details.

## SYSTEM REQUIREMENTS

### PROCESSOR

1GHz Pentium

### DISK SPACE

100MB

### OPERATING SYSTEMS

Windows Server 2012

Windows Server 2012 R2

Windows Server 2016

Windows Server 2019

### SERVER INSTALLATION

Group Policy  
Management Console

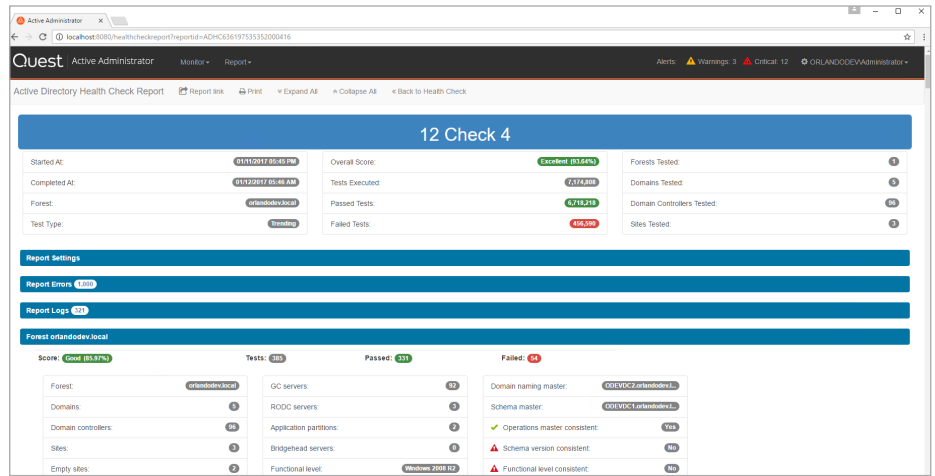
Microsoft SQL Server 2012,  
2014, 2016, 2017 and 2019

Microsoft SQL Express  
2012 and 2014

.NET Framework  
v.4.5.2 and 4.6

### DETAILED REQUIREMENTS

See the Release Notes  
for the full list of system  
requirements.



Get on-demand diagnostic data from a centralized dashboard with Active Administrator for AD Health.

- **Centralized diagnostic console** — Discover the flow of data from the network through a domain controller using visual flow charts, graphs and icons. In this consolidated view of system status, resource bottlenecks are highlighted in yellow and red, and you can drill down on alerts for further analysis.
- **Simplified AD health analysis** — Proactively monitor and diagnose critical, directory-wide infrastructure issues from replication latency to Domain Name System (DNS) inconsistencies. When a problem occurs, an alert notifies you immediately of the exact nature and location of the problem, saving you analysis and troubleshooting time. Following critical alerts, built-in or custom remediation actions run automatically to fix the problem.
- **Streamlined enterprise-wide troubleshooting** — Diagnose directory problems without server-by-server, test-by-test troubleshooting using a comprehensive set of troubleshooting tests and utilities. From domain controller health to DNS and replication, Active Administrator for AD Health isolates and repairs problems, and generates detailed reports for current use and historical reference.
- **Automated AD health checks and repairs** — Alleviate the pain of manual AD troubleshooting with more than 100 AD health check tests, including replication failure, queue length, DNS zone and SYSVOL consistency. Run multiple tests against selected domain controllers, sites, domains or naming contexts.
- **DNS management** — Proactively manage, monitor and alert on DNS server health with free access to Active Administrator for DNS Management. Enable your IT administrators to proactively manage, monitor and alert on Domain Name Server health and availability from a single, easy-to-use console.
- **Custom Services and Performance Counters alerts** — In addition to your AD environment, you can now self-select additional Windows services and performance counters that are required to be monitored so you can identify the root cause of problems before they impact users.

## ABOUT QUEST

Quest provides software solutions for the rapidly changing world of enterprise IT. We help simplify the challenges caused by data explosion, cloud expansion, hybrid datacenters, security threats and regulatory requirements. Our portfolio includes solutions for database management, data protection, unified endpoint management, identity and access management and Microsoft platform management.